



GAT MONTHLY MEMBERSHIP PROGRESS REPORT

Results as of: 7/31/2021

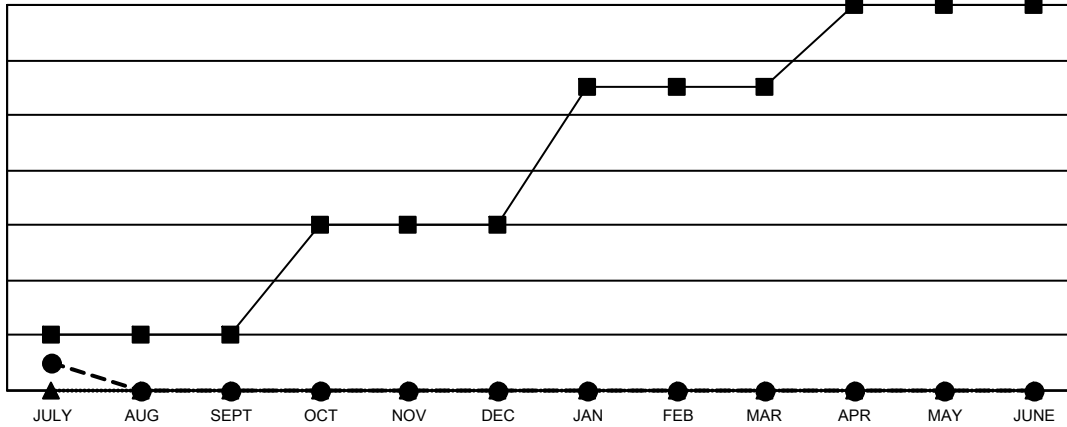
Multiple District 9

LOCATION: IOWA

Clubs			
RESULTS FOR 2021-2022			
QUARTER	NEW CLUB GOAL	NEW CLUBS	DROPPED CLUBS
JULY/AUG/SEPT	2	1	7
OCT/NOV/DEC	4	0	0
JAN/FEB/MAR	5	0	0
APR/MAY/JUNE	3	0	0

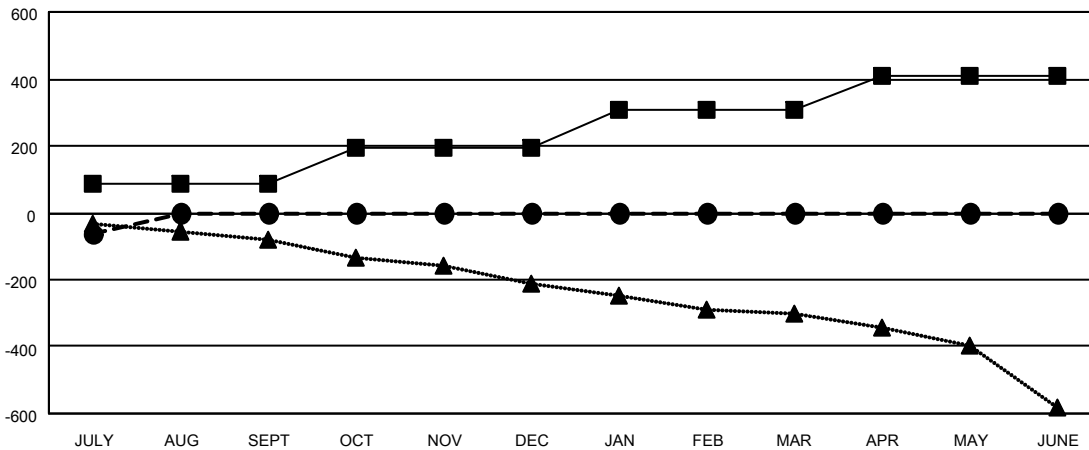
Members			
RESULTS FOR 2021-2022			
QUARTER	MEMBER GROWTH NET GOAL	MEMBER GROWTH ACTUAL	DROPPED MEMBERS ACTUAL (including transfers)
JULY/AUG/SEPT	88	75	127
OCT/NOV/DEC	108	0	0
JAN/FEB/MAR	110	0	0
APR/MAY/JUNE	105	0	0

GOALS AND ACTUAL NEW CLUBS CUMULATIVE



- - CURRENT YEAR GOALS FOR NEW CLUBS
- - CURRENT YEAR ACTUAL NEW CLUBS
- ▲ - LAST YEAR ACTUAL NEW CLUBS

GOALS AND ACTUAL MEMBERS CUMULATIVE



- - MEMBER GROWTH NET GOAL
- - MEMBER GROWTH ACTUAL
- ▲ - LAST YEAR MEMBERSHIP ACTUAL

DROPPED CLUBS: 7	
<u>DROPPED MEMBERS</u>	
DECEASED	14
CLUB CANCELLED	0
OTHER	113
TOTAL	127

29 CLUBS OF 302 ADDED 1 OR MORE NEW MEMBERS

GENDER DISTRIBUTION	
MALE	5,160 (73.10%)
FEMALE	1,899 (26.90%)

[CLICK HERE FOR CUMULATIVE MEMBERSHIP DATA](#)

TOTAL FAMILY UNIT MEMBERS	1,444
FAMILY MEMBERS PAYING HALF DUES	734